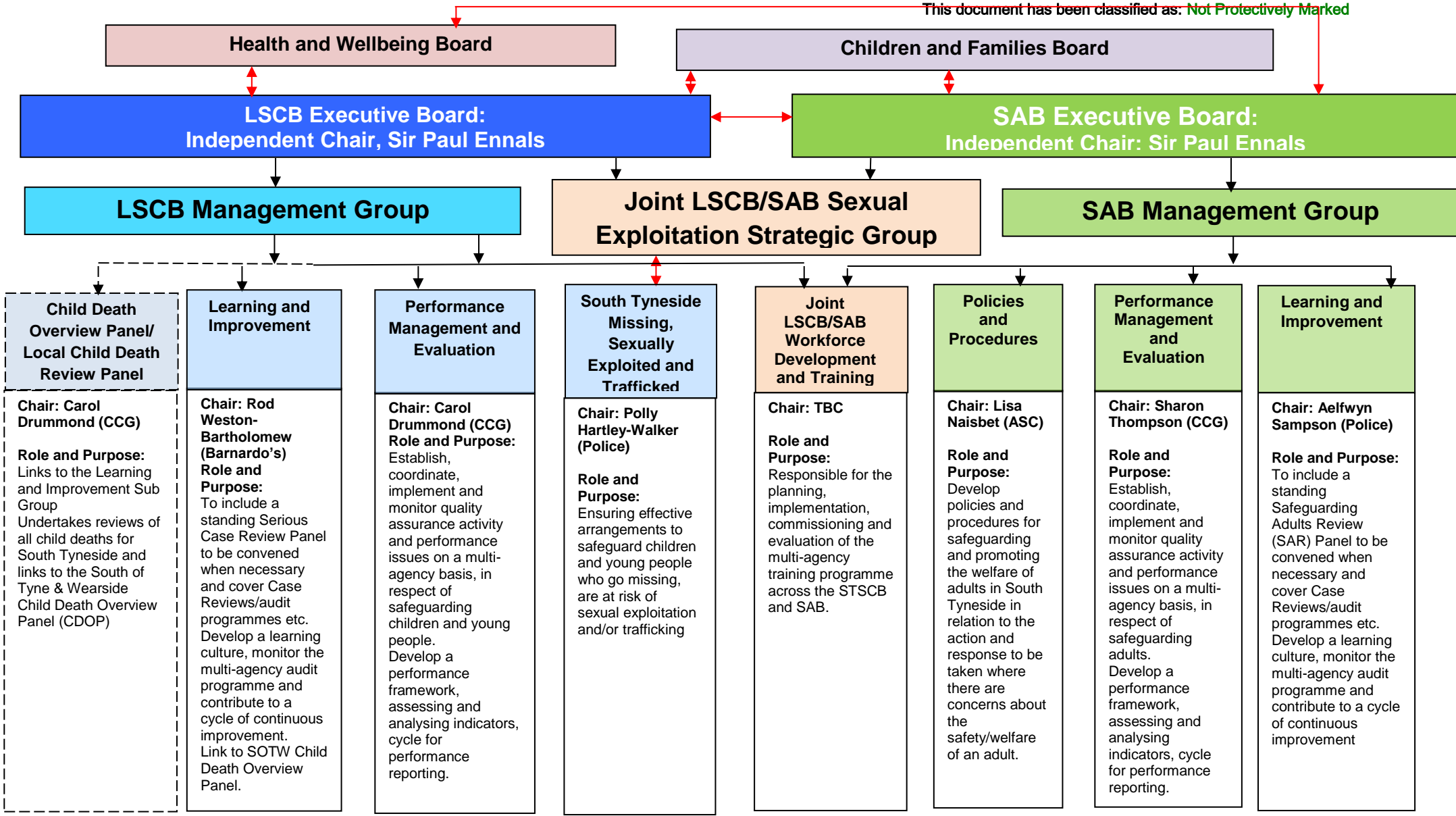


**SOUTH TYNESIDE LOCAL SAFEGUARDING CHILDREN BOARD/SAFEGUARDING ADULTS BOARD ORGANISATIONAL STRUCTURE**

This document has been classified as: **Not Protectively Marked**



Note: the LSCB has a virtual Policies and Procedures Group as safeguarding procedures are hosted by Tri.x and local amendments agreed via email.

**Children, Young People and Adults at Risk or with complex needs and disabilities must be considered throughout all sub groups.**

**Key:** —> Line of Communication      <--> Two Way Line of Communication      - - - - - Ensuring links with other groups      - - - - -> Time limited task and finish group