

Management Structure



Chief Executive
Martin Swales
Tel: 424 7010



Acting Corporate Director
Children, Adults and Health
Mike Conlon
Tel: 424 7568



Corporate Director Business
and Resources
Stuart Reid
Tel: 424 7765



Acting Corporate Director
Economic Regeneration
George Mansbridge
Tel: 424 7969



Director of
Public Health
Tom Hall
Tel: 424 7566



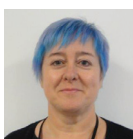
Head of Adults
and Integrated Care
Victoria Pattinson
Tel: 424 7055



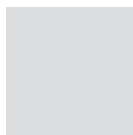
Head of Children
and Families Social Care
Shona Gallagher
Tel: 427 2652



Head of Learning
and Early Help
Beverley Scanlon
Tel: 424 7015



Head of Integrated
Commissioning
Janet Evans
Tel: 424 7055



Interim Head of Legal
Services
Stephen Gerrard
Tel: 424 7015



Head of Pensions
Ian Bainbridge
Tel: 424 4112



Head of Marketing
Tania Robinson
Tel: 424 7040



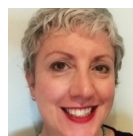
Head of Corporate
and External Affairs
Nicola Robason
Tel: 424 7969



Corporate Lead -
HR Services
Graham Fells
Tel: 424 7969



Corporate Lead -
Strategy and Performance
Hayley Johnson
Tel: 424 7566



Corporate Lead -
ICT and Digital
Caroline Harper
Tel: 424 7351



Corporate Lead -
Culture and Leisure
David Brooks
Tel: 424 7570



Head of Development
Services
Vacant



Head of Regeneration
and Asset Management
Vacant



Head of Highways
and Transport
Derek Smith
Tel: 427 2652



Corporate Lead -
Business Investment
John Scott
Tel: 424 7040



Corporate Lead -
Economic Strategy and Skills
Sarah McMillan
Tel: 424 7040



Corporate Lead -
Area Management
Andrew Whittaker
Tel: 424 7352