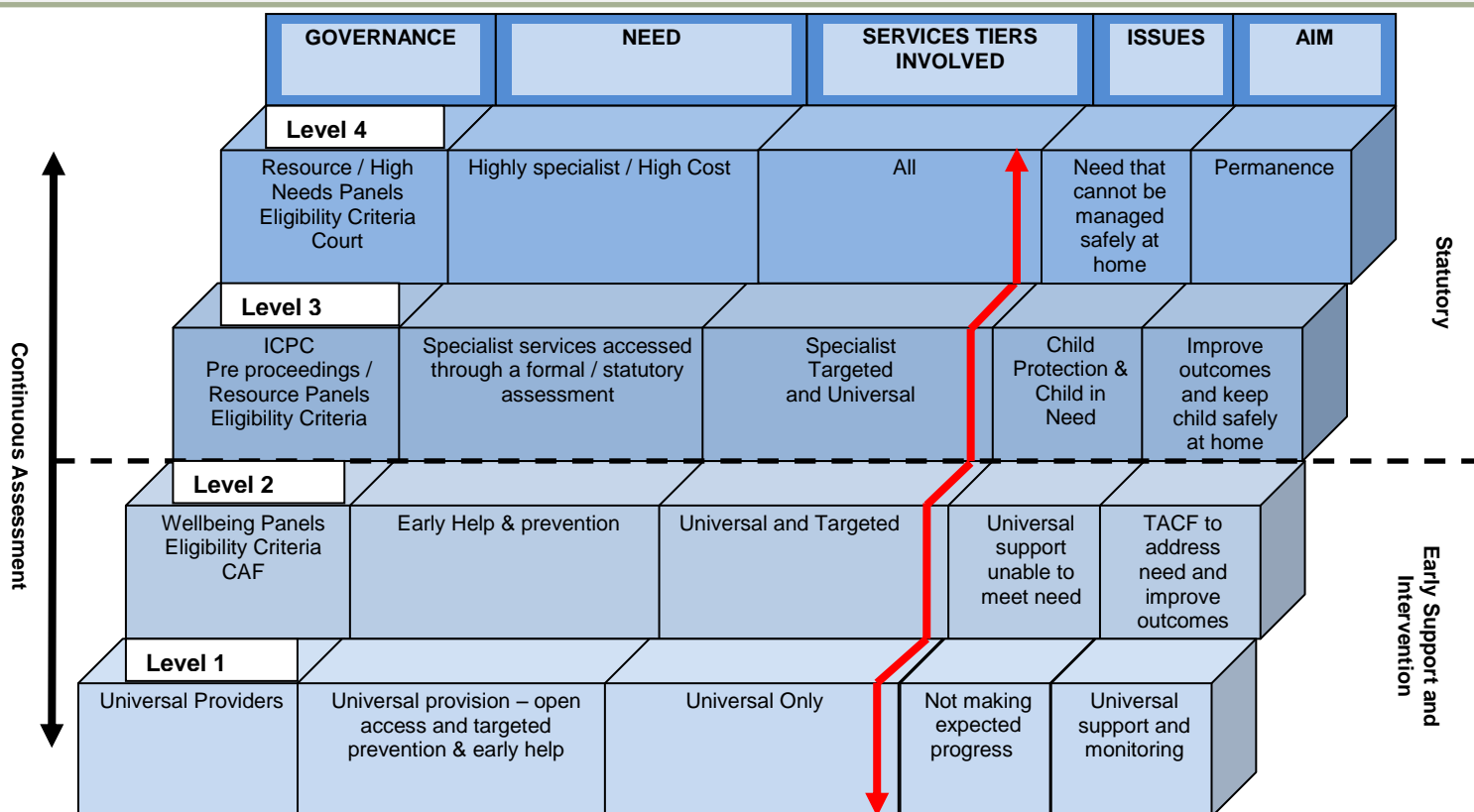


MULTI-AGENCY THRESHOLDS TO SAFEGUARD, PROTECT AND PROMOTE THE WELFARE OF CHILDREN

'providing the right support at the right time'



Level 1: Universal

Includes early help services delivered within a universal setting

Level 2: Early intervention and targeted provision

A Common Assessment Framework (CAF) assessment is instigated resulting in extra support of at least one additional service - and may require coordination of services by a Lead Professional and a Team Around the Child and Family (TACF)

Level 3: Services to keep the child safely at home

Intensive support is needed to achieve the expected outcomes, often on a statutory basis through children's social care. Requires a Team Around the Child and Family (TACF) coordinated by a social worker

Level 4: Needs that cannot be managed safely at home

Intensive support from a range of specialist services. These children will often need to be accommodated outside of their immediate family or may require admission into hospital. Requires a Team Around the Child and Family in most cases coordinated by a social worker

The Common Assessment Advice Team (03000 11 5670)

offers advice and signposting on the range of services for children, young people and families. The Common Assessment Advice Team can help professionals with the completion of Common Assessment Framework (CAF) assessments, allocate a professional to visit the referrer to help collect information, as well as assign a Lead Professional to oversee the delivery of services. The team also coordinates children and young people's wellbeing panels, which assess the most complex cases and decide on appropriate interventions.

Referral and Assessment Service (0191 4245010) is the point of contact for anyone who suspects a child is at risk of abuse and neglect.

The Out of Hours Service (0191 4562093) takes over from the Referral and Assessment Service 4.45 pm-8.30 am Monday to Thursday and 4.30 pm-8.30am Friday to Monday.



South Tyneside Council